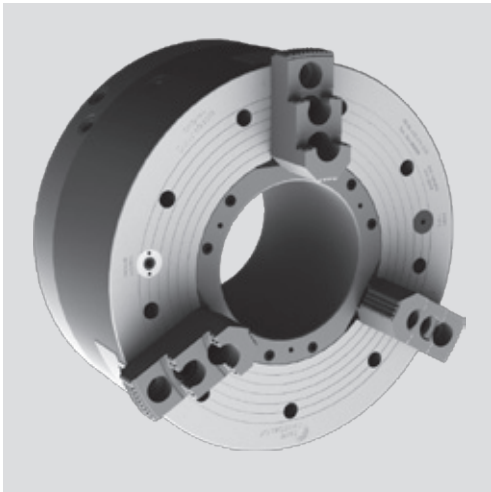


BIG BORE® BB-N ES

INCH serration

Front-end pneumatic power chucks EXTRA LARGE THROUGH HOLE Ø 140 - 560 mm

- chuck size 400 - 1000
- extended jaw stroke
- 3 jaws



Application/customer benefits

- End machining of long pipe with collars
- Rapid and clamping stroke for short clamping cycles
- Full spindle bore can be used

Technical features

- Air chuck for external clamping with built-in pneumatic cylinder
- Rapid and clamping stroke
- Air feed via distributor ring and SMW-profile seals, at stopped spindle
- Built in non-return valves maintain the air pressure during machining
- Clamping pressure level constantly checked by a safety control system (only for external clamping).
- Clamping stroke control (no clamping in rapid stroke) is monitored.

Standard equipment

- 3 jaw chuck
- 2 elbow unions G 1/2" (4 for BB-N 1000)
- 12 mounting bolts (9 for the BB-N ES 400)
- 1 lifting eye bolt
- 1 set T-nuts with bolts
- 1 set soft top jaws without distributor ring bracket

Ordering example

BIG BORE BB-N ES 400/Z310

Accessories

Control unit AC-BB/AC-XN
(see pages 274-276)

The principle invented by SMW: air supply via distributor ring and SMW-profile seal rings

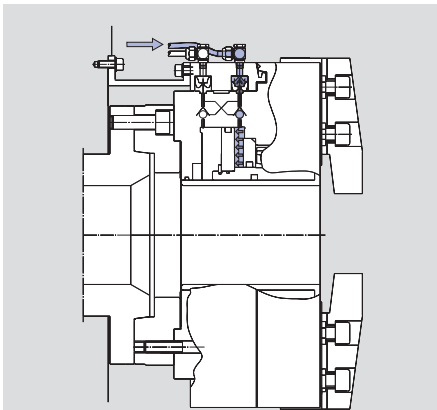


Fig. 1

Open/close movement (only possible at stopped spindle). The profile seals deform radially under the pneumatic pressure, sealing on the chuck body and filling the cylinder chamber. When the clamping pressure is reached, the air feed is stopped, closing the twin non-return valve.

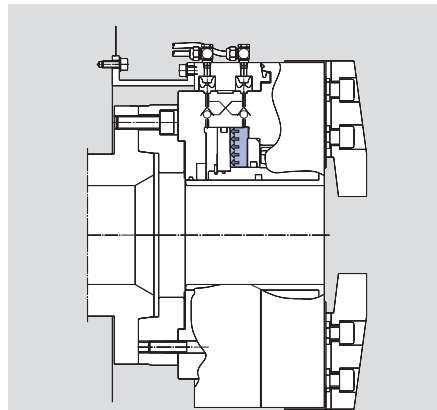


Fig. 2

The SMW-profile seals lift to the expanded position, not touching the chuck body anymore. The clamping pressure is maintained by the twin non-return valve. The chuck can start to rotate.

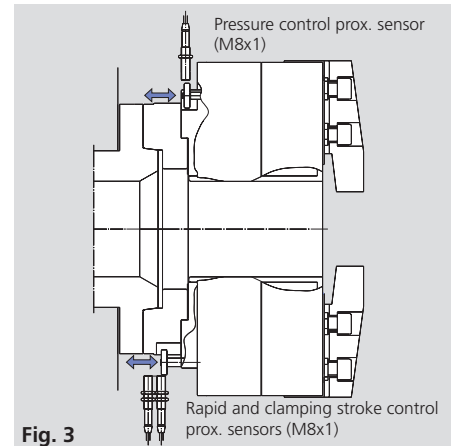
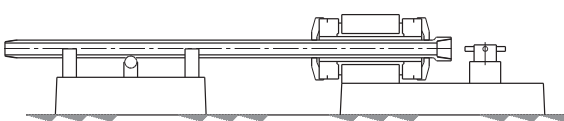


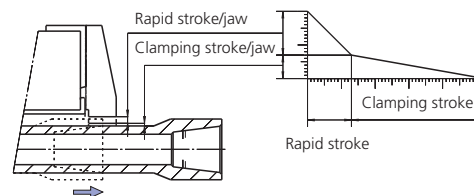
Fig. 3

Safety pressure control: If the pressure is less than a pre-set safety level, the switch ring moves into the proximity-switch field, sending an alarm signal.

Jaw stroke control: If the part is clamped in a not correct jaw stroke position, the switch ring moves into the proximity-switch field sending an alarm signal.



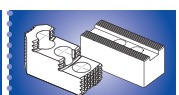
End machining of pipe with front and rear chucks



Technical data

SMW-AUTOBLOK BB-N ES Type		400-140	470-191	500-205	500-230	600-275	630-325	850-375	1000-560
Id. No.		052330	053536	052651	052652	052990	052653	052654	052655
Through-hole	mm	140	191	205	230	275	325	375	560
Total stroke per jaw	mm	20	20	25.4	25.4	25.4	25.4	25.4	25.4
Rapid stroke per jaw*	mm	13	13	16.9	16.9	16.9	17.2	13.4	15
Clamping stroke per jaw	mm	7	7	8.5	8.5	8.5	8.2	12	10.4
Operating pressure min./max.	bar	2/10	2/10	2/10	2/10	2/10	2/10	2/10	3/10
Piston area	cm ²	705	565	1004	895	954	1270	1340	1090
Gripping force at 6 bar	kN	130	115	190	170	185	220	200	170
Max. speed	r.p.m.	1300	1300	1100	1300	1100	1000	750	450
Air consumption/jaw stroke at 6 bar	liter	29	22	41	37	39	48	79	57
Weight (without top jaws)	kg	200	190	340	325	360	630	970	960
Moment of inertia	kg.m ²	6.5	9.83	16.4	16.1	19	36	105	160

*must not be used for clamping

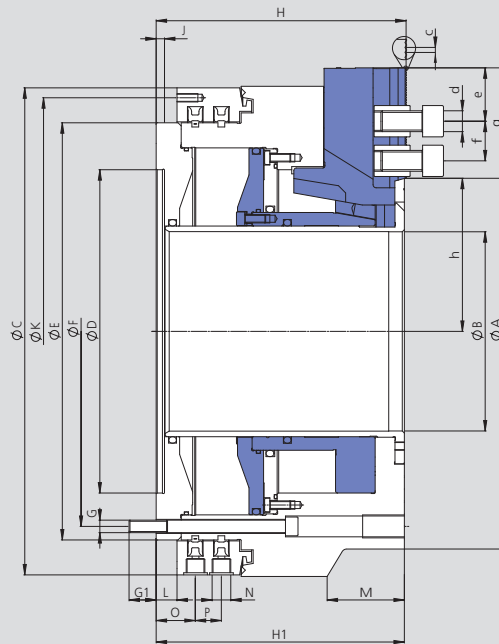
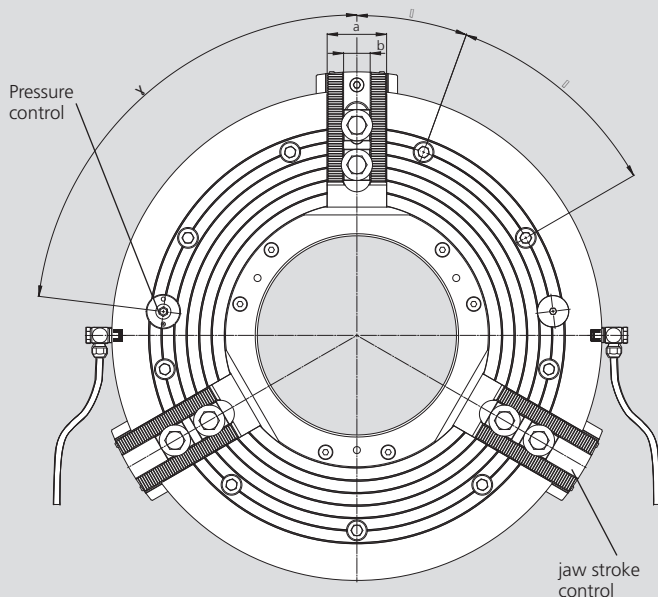


BIG BORE® BB-N ES

INCH serration

Main dimensions and technical data

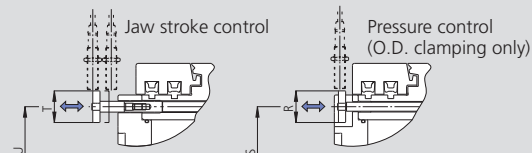
Jaw position: Open for external clamping



* All hoses/piping must be at least 1/2" ID, and min 3/4" ID from chuck size 630 on!

BB-N ES 1000 needs 2 hoses per function open/close (see installation manual)

To determine the exact position of the jaw stroke control and the pressure control please ask for a customer drawing



enlarged illustration

Subject to technical changes
For more detailed information please ask for customer drawing

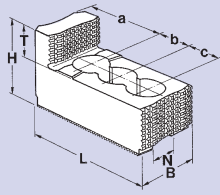
SMW-AUTOBLOK BB-N ES Type		400-140	470-191	500-205	500-230	600-275	630-325	850-375	1000-560	
Id. No.		052330	053536	052651	052652	052990	052653	052654	052655	
Mounting		Z310	Z310	Z415	Z415	Z450	Z510	Z700	Z700	
	A	mm	467	470	570	570	605	685	850	1000
	B	mm	140	191	205	230	275	325	375	560
	C	mm	467	467	570	570	605	685	850	925
	D H6	mm	310	310	415	415	450	510	700	700
	E	mm	400	400	500	500	535	610	775	850
Fixing bolts circle	F	mm	374	374	474	474	508	580	745	815
	G	mm	M12	M12	M12	M12	M12	M16	M16	M16
	G1	mm	26	26	25	25	25	30	30	30
	H	mm	240	240	282	282	282	307.5	354	332
	H1	mm	238	238	280	280	280	305.5	352	330
	J	mm	8	8	8	8	8	8	8	10
Thread circle 6 x M8	K	mm	448	448	550	550	585	666	830	910
	L	mm	20	20	20	20	20	25	25	33
	M	mm	-	-	-	-	-	-	-	224
Pneumatic connection	N	inch	G 1/2"	G 1/2"	G 1/2"	G 1/2"	G 1/2"	G 1/2"	G 1/2"	G 1/2"
	O	mm	37	37	37	37	37	39.5	44.5	52.5
	P	mm	26	26	26	26	26	33	33	33
	R	mm	35	35	35	35	35	42	35	42
	S	mm	374	374	474	474	508	575	745	815
	T	mm	35	35	35	35	35	35	35	35
	U	mm	374	374	474	474	508	580	745	815
	a	mm	57	57	57	57	57	75	75	75
	b	mm	25.5	25.5	25.5	25.5	25.5	30	30	30
Serration	c	inch	3/32" x 90°	3/32" x 90°	3/32" x 90°	3/32" x 90°	3/32" x 90°	3/32" x 90°	3/32" x 90°	3/32" x 90°
Bolt ISO 4762 12.9	d	mm	M20	M20	M20	M20	M20	M24	M24	M24
	min. e	mm	14	14	14	14	16	16	16	16
T-nuts distance	min./max. f	mm	38/90	38/85	38/104	38/92	38/79	47/100	47/140	47/125
Serration length	g	mm	121	106	140	127.5	116.5	138	182	166
	min./max. h	mm	104/124	127/147	145.6/171	158/182.5	179.1/204.5	204.6/230	242.6/268	334.6/360
	α°		20	20	15	15	15	15	15	15
	β°		9 x 40	9 x 40	12 x 30	12 x 30	12 x 30	12 x 30	12 x 30	12 x 30
(Pressure control)	γ°		83	83	60	60	60	60	60	60

BIG BORE® BB-N ES

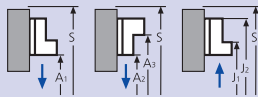
INCH serration

- Top jaws
- T-nuts

GUB Hard reversible top jaws

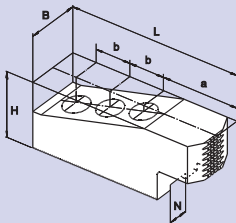


Gripping ranges

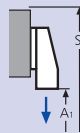


Chuck BB-N ES	400-140	470-191	500-205	500-230 600-275	630-325	850-375	1000-560
Jaw type	MHB-D 500	GUB 500	GUB 500	GUB 500	GUB 630	GUB 800	GUB 800
Id. No.	12084546	12084546	12084546	12084546	12086446	12088046	12088046
B	60	60	60	60	75	75	75
H	75	75	75	75	85	85	85
L	140	140	140	140	160	220	220
T	2 x 19	2 x 19	2 x 19	2 x 19	30	30	30
N	25.5	25.5	25.5	25.5	30	30	30
Serration	3/32" x 90°	3/32" x 90°	3/32" x 90°	3/32" x 90°	3/32" x 90°	3/32" x 90°	3/32" x 90°
a	46	46	46	46	30	51	51
b	38	38	38	38	50	62	62
c	38	38	38	38	50	62	62
kg/set	6.6	6.6	6.6	6.6	13.5	19.5	19.5
A1	78-264	113-270	175-388	200-388	295-500	320-610	470-760
A2	125-310	160-315	225-435	250-435	295-500	330-620	480-770
A3	310-495	345-500	410-620	435-620	495-700	590-865	745-1030
J1	-	-	-	-	-	-	-
J2	-	-	-	-	-	-	-
S	635	640	765	765	870	1070	1250

GAB Hard top jaws

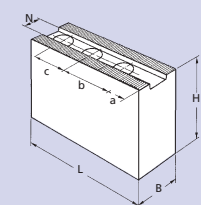


Gripping ranges

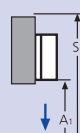


Chuck BB-N ES	400-140	470-191	500-205	500-230 600-275	630-325	850-375	1000-560
Jaw type	GAB 500	GAB 500	GAB 500	GAB 500	GAB 630	GAB 800	GAB 800
Id. No.	12085146	12085146	12085146	12085146	12086546	12089046	12089046
B	55	55	55	55	75	75	75
H	73	73	73	73	82	82	82
L	195	195	195	195	245	320	320
N	25.5	25.5	25.5	25.5	30	30	30
Serration	3/32" x 90°	3/32" x 90°	3/32" x 90°	3/32" x 90°	3/32" x 90°	3/32" x 90°	3/32" x 90°
a	96	96	96	96	113	165	165
b	38	38	38	38	50	60	60
c	38	38	38	38	50	60	60
kg/set	16.5	16.5	16.5	16.5	31.5	40.5	40.5
A1	25-160	60-165	75-290	100-290	130-335	95-385	245-535
S	635	640	765	765	870	1060	1210

WBSA-D/WBC-D Soft top jaws



Gripping ranges



Chuck BB-N ES	400-140	470-191	500-205	500-230 600-275	630-325	850-375	1000-560
Jaw type	WBSA-D 500	WBSA-D 500	WBSA-D 500	WBSA-D 500	WBC-D 630	WBC 800	WBC-D 800
Id. No.	12075050	12075050	12075050	12075050	12076440	12078040	12078040
B	60	60	60	60	80	80	80
H	60	60	60	60	80	80	80
L	170	170	170	170	240	320	320
N	25.5	25.5	25.5	25.5	30	30	30
Serration	3/32" x 90°	3/32" x 90°	3/32" x 90°	3/32" x 90°	3/32" x 90°	3/32" x 90°	3/32" x 90°
a	69	69	69	69	110	165	165
b	38	38	38	38	50	60	60
c	38	38	38	38	50	60	60
kg/piece	3.6	3.6	3.6	3.6	11	15	15
A1	35-220	70-225	130-335	155-335	135-340	95-385	245-535
S	590	595	720	720	865	1060	1210

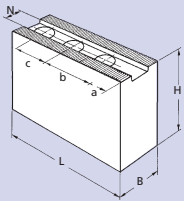


- Top jaws
- T-nuts
- Adapters

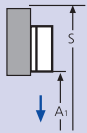
BIG BORE® BB-N ES

INCH serration

WBCL Soft top jaws long version

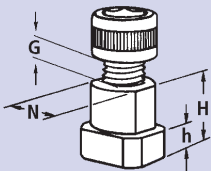


Gripping ranges



Chuck BB-N ES	400-140	470-191	500-205	500-230 600-275	630-325	850-375	1000-560
Jaw type	WBC-D 502	WBC-D 502	WBC-D 502	WBC-D 502	WBC-D 800	WBCL-D 800	WBCL-D 800
Id. No.	12075140	12075140	12075140	12075140	12078040	12079040	12079040
B	60	60	60	60	80	80	80
H	60	60	60	60	80	80	80
L	205	205	205	205	320	390	390
N	25.5	25.5	25.5	25.5	30	30	30
Serration	3/32" x 90°	3/32" x 90°	3/32" x 90°	3/32" x 90°	3/32" x 90°	3/32" x 90°	3/32" x 90°
a	104	104	104	104	165	230	230
b	38	38	38	38	60	60	60
c	38	38	38	38	60	60	60
kg	4.5	4.5	4.5	4.5	15	18	18
A1	-	0-150	60-275	85-275	25-210	25-255	115-405
S	-	595	720	720	895	1070	1220

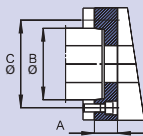
NST T-nuts



Chuck BB-N ES	400-140	470-191	500-205	500-230 600-275	630-325	850-375	1000-560
Jaw type	NST	NST	NST	NST	NST	NST	NST
Id. No.	12065020	12065020	12065020	12065020	13063900	13063900	13063900
N	25.5	25.5	25.5	25.5	30	30	30
H	34	34	34	34	44	44	44
h	15	15	15	15	18	18	18
G	M 20	M 20	M 20	M 20	M 24	M 24	M 24
Bolt ISO 4762 12.9	M20 x 40	M20 x 40	M20 x 40	M20 x 40	M24 x 60	M24 x 60w	M24 x 60

Adapters for BIG BORE chucks

ISO-A
DIN 55026
mounting
adapters



BB-N ES	400-140/470-191			500-205/500-230			600-275			630-325			850-375		1000-560	
Spindle nose	A8	A11	A15	A11	A15	A20	A11	A15	A20	A11	A15	A20	A15	A20	A15	A20
Id. No.	24184020	24114020	24124020	24115030	24125020	24175020	24116020	24126020	24176020	24116320	24126320	24176320	24128020	24178020	on request	
A mm	40	40	40	40	40	40	40	40	40	50	50	50	50	50		
B mm	139.719	196.869	285.775	196.869	285.775	412.775	196.869	285.775	412.775	196.869	285.775	412.775	285.775	412.775	265.775	412.775
C mm	171.4	235	330.2	235	330.2	463.6	235	330.2	463.6	235	330.2	463.6	330.2	463.6	330.2	463.6

Bayonet and camlock flanges are available on request



For additional jaws and accessories please ask for our 150 pages special catalogue!